



Sage Accpac

Extended Enterprise Suite

Sage Abra Capabilities Overview

It's a difficult time for a small- or medium-sized company to be in business. We understand the unique challenges you may face, such as lack of good information about your workforce, having limited technical capabilities or budgets to spend on human resources (HR) and payroll systems, or not having enough time to manage HR and payroll compliance and administration. There is fierce competition, your customers are more demanding, and pace of change is increasing. That's why, now more than ever, you need a partner that understands the challenges you face—a partner like Sage. Does your business need to:

- Do more with fewer resources and become more streamlined and efficient?
- Decrease expenses and contain costs at every level?
- Retain, develop, and attract the right talent to propel the business forward?
- Ensure rising benefit costs?
- Ensure your company is compliant with complex and ever-changing workforce laws and regulations?
- Avoid litigation and limit legal exposure?
- Retain clients and your company's position in the marketplace?

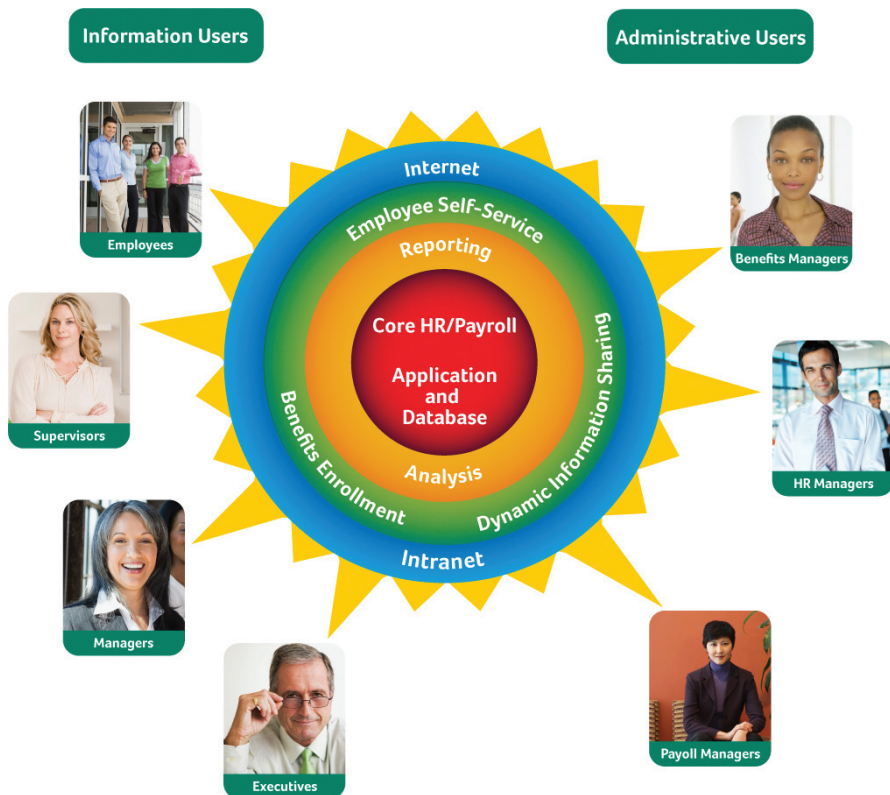
Over the years, Sage has developed industry-leading, adaptable software solutions that optimize business processes. Whether you need assistance with HR administration, benefits, or payroll, Abra HRMS delivers a tightly integrated, scalable solution that drives efficiencies and improves productivity—all on a customizable and cohesive platform.

The Sage Abra HRMS solution delivers:

- Comprehensive features and functionality
- HR reporting and productivity
- HR compliance
- Payroll
- Employee self-service
- Employee development
- Attendance, time-off, and absence management
- On-line benefits enrollment
- Employee administration
- Benefits administration
- Compensation
- Safety
- Powerful reporting and analysis capabilities
- Flexible deployment (either in-house or hosted)

Dynamic Information Sharing

Abra's innovative new dynamic information sharing capability empowers HR to securely connect executives, managers, and others with the critical workforce information they need, when they need it and how they need it.



Abra HRMS drives down costs by streamlining day-to-day HR, benefits, and payroll management, so that you and your staff are freed up to spend more time and energy on the business asset that is most critical to your company—your employees.

Abra HRMS delivers flexible, scalable, and comprehensive tools to help you automate and improve your business processes and produce the information you need to better manage your workforce. Unlike other systems, Abra is the only solution that combines low cost, ease of use, and the ability to **dynamically share information** with executives, managers, and others both inside and outside your organization.

New Feature!

Dynamic Information Sharing

Abra's innovative new dynamic information sharing capability empowers HR to securely connect executives, managers, and others with the critical workforce information they need, when they need it and how they need it.

A NEW capability that:

- Empowers HR, without IS support, to define and manage what information users see.
 - Intuitive and easy for HR to use, so there is no need for extensive training or technical knowledge
- Protects sensitive HR data.
 - Secure access controlled through user logon authorizations
 - HR defines each user's role to automatically control what information each is authorized to see
- Automatically tailors the information for each individual user.
 - Abra recognizes the user upon logon and displays the information based on that user's role
- Keeps information up to date without HR intervention.
 - The information is dynamically refreshed every time the user accesses it
- Lets the users decide where, when, and how to use the information without HR involvement.

Why choose Sage?

- We are the most experienced and established HR/payroll software provider serving small and midsize organizations
 - Introduced first PC-based HR system to the market in 1986
 - Over 19,000 Abra systems sold
 - Our top Abra business partners, local HRMS technology consulting experts, have well over 300 years of collective HR and payroll experience, and most have Professional in Human Resources (PHR), and/or Certified Payroll Professional (CPP) designations
 - Uniquely qualified with a diverse group of Extended Solutions Providers
 - Support and service staff hold certifications, such as CPP, PHR, Microsoft Certified Systems Engineer and Microsoft Certified Database Administrator
- We are specialists in working with customers who may be adopting HRMS technology for the first time
 - For many of our customers, Abra is their first commercial HRMS software system
 - We understand the challenges you may be facing, like being understaffed, having inadequate systems, or limited technical capabilities or limited budgets
- We have the strength to be your long-term business partner, especially in an uncertain economy
 - Abra is part of Sage North America. Sage NA had \$986.8M total 2008 North American revenue and has 2.8 million customers
 - Our parent company, Sage Group PLC, is the largest business software provider to small and midsize businesses (\$2.55B total 2008 global revenue, 5.8 million customers)
 - Large Abra customer base supports a healthy development partner community (Extended Solutions Providers)
- We are the recognized leader in HR/payroll solutions for small and midsize businesses
 - Best-of-Breed Software Vendors List (HR & Compensation) - *Business Finance* magazine – 2003-2009
 - Perfect 5-Star Review (Abra Payroll) – *CPA Technology Advisor* – 2009
 - Top 100 Products (Abra Payroll) - *Accounting Today* magazine – since 2004
 - Sage Abra HRMS [...] is the leading on-premise HRMS option for companies with fewer than 1,000 employees." - *The Forrester Wave™: Human Resource Management Systems*, Q4 2008

About Sage North America

Sage North America is part of The Sage Group plc, a leading global supplier of business management software and services. Sage North America employs approximately 4,100 people and supports nearly 2.9 million small and medium-size business customers. The Sage Group plc, formed in 1981, was floated on the London Stock Exchange in 1989 and now employs 14,500 people and supports 5.8 million customers worldwide. For more information, please visit the Web site at www.sagenorthamerica.com.

13888 Wireless Way
Suite 120
Richmond BC V6V 0A3
tel. 604-207-9480 | fax. 604-207-3620
www.SageAccpac.com

